

BBS



Oil Pattern Distance: 40 Feet **Reverse Brush Drop:** 40 Feet **Oil Per Board:** 35 uL
Forward Oil Total: 8.54 mL **Reverse Oil Total:** 5.495 mL **Volume Oil Total:** 14.035 mL
Forward Boards Crossed: 244 Boards **Reverse Boards Crossed:** 157 Boards **Total Boards Crossed:** 401 Boards

	Start	Stop	Loads	Speed	Crossed	Start	End	Feet	T.Oil
1	3L	3R	3	18	105	0.0	5.1	5.1	3675
2	10L	10R	3	18	63	5.1	12.7	7.6	2205
3	10L	10R	2	18	42	12.7	17.8	5.1	1470
4	12L	12R	2	18	34	17.8	22.9	5.1	1190
5	2L	2R	0	18	0	22.9	24.0	1.1	0
6	2L	2R	0	22	0	24.0	32.0	8.0	0
7	2L	2R	0	30	0	32.0	39.0	7.0	0
8	2L	2R	0	10	0	39.0	40.0	1.0	0

	Start	Stop	Loads	Speed	Crossed	Start	End	Feet	T.Oil
1	2L	2R	0	30	0	40.0	35.0	-5.0	0
2	11L	11R	3	22	57	35.0	25.7	-9.3	1995
3	8L	8R	4	18	100	25.7	15.5	-10.2	3500
4	2L	2R	0	14	0	15.5	12.0	-3.5	0
5	2L	2R	0	14	0	12.0	0.0	-12.0	0

Conditioner:
Type In or Select One

TransferType:
Type In or Select One

Forward



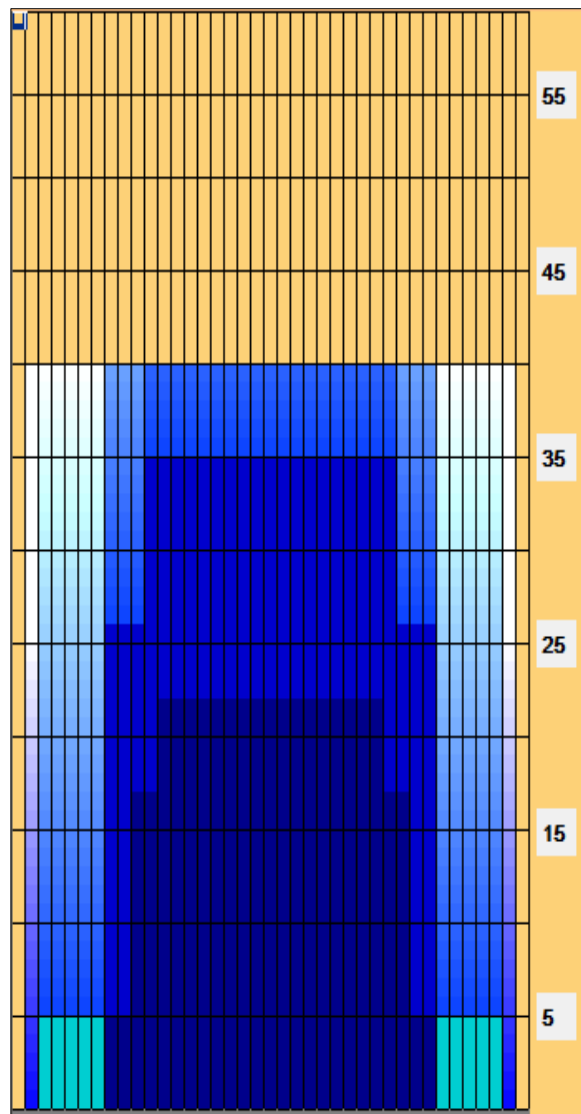
Reverse



Combined



Buff



Item	3L-7L:18L-18R	8L-12L:18L-18R	13L-17L:18L-18R	18L-18R:17R-13R	18L-18R:12R-8R	18L-18R:7R-3R
Description	Outside Track:Middle	Middle Track:Middle	Inside Track:Middle	Middle:Inside Track	Middle:Middle Track	Middle:Outside Track
Track Zone Ratio	5.67	1.47	1	1	1.47	5.67

